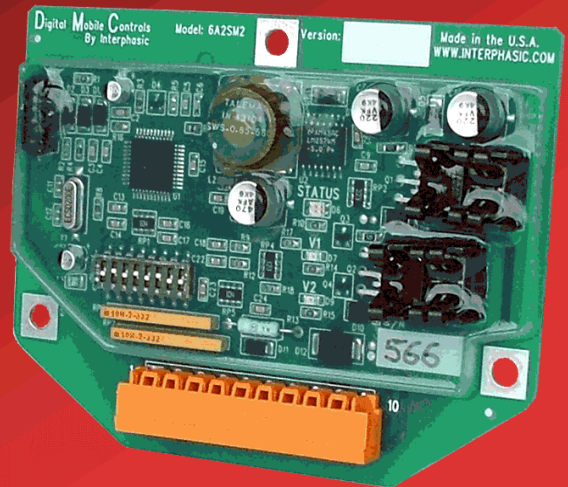


Digital Mobile Controls

Model 6A2SM2

The Interphasic LLC 6A2SM2 Digital Mobile Controller is designed for the industrial mobile equipment industry. Each controller is capable of interfacing with pneumatic, hydraulic or electro-mechanical devices. With PWM output capable, electrical loads can be modulated for accurate response.

All digital mobile controllers come with a free programming template for fast software development. At your request, Interphasic LLC can develop the control software to meet your requirements.



Features

- * Microchip RISC PIC16F 8-bit Microcontroller
- * 20Mhz = 200nS Fast execution time
- * 7.2 kByte Flash memory
- * 128 Byte EEPROM
- * 192 Byte RAM
- * Interfaces with industrial sensors
- * Digitally hardened against EMI and ESD
- * Conforms to SAE J1113 transient load dump
- * In-System Flash programmable
- * Operating temperature -40°C to +85°C
- * Operating voltage 9 to 30 VDC
- * 24mA operating current
- * Outputs are short proof protected
- * Tell-Tail LED's for diagnostic feedback
- * Compact size of 4.5" x 3.4" x 0.9"
- * UL 94V-0 flame-retardant classification
- * Lead-Free assembly
- * Weight = 3.1 oz
- * 2 Year warranty

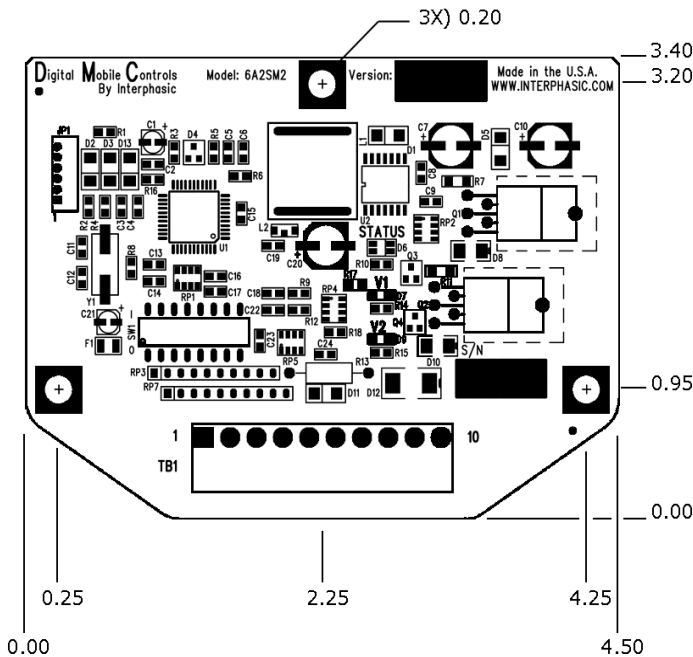


1621 Plumas Ave
Seaside, CA 93955

Phone: (831) 392-0708
Web: www.interphasic.com
E-mail: sales@interphasic.com

DIGITAL MOBILE CONTROLS - Model 6A2SM2

Controller Outline



About Interphasic LLC

Interphasic LLC designs and manufactures embedded digital mobile controllers used in many industrial markets. These market sectors include transportation, agriculture, aircraft ground equipment and commercial dispensing systems. All controllers can be user programmed or Interphasic LLC can supply a software solution to fit your needs. Call us or visit our website at www.interphasic.com.

Inputs & Outputs

- * (5) +/- 30 VDC Digital Inputs
or
- * (2) +/- 30 VDC Digital Inputs
- * (2) 0 to 5 VDC Analog Inputs selectable
- * (1) +5 Volt sensor reference selectable

- * (1) 0 to 30 VDC Frequency/Digital Input

- * (2) 9 to 30 VDC 5A Digital/3A PWM Outputs
or
- * (1) 0 to 100% D.C. PWM 1A Servo Output

- * Output short circuit protected

- * DIP switch for controller/equipment options

- * Tell-Tail LED's for controller status

- * Integrated B+ voltage monitor

Environmental

- * Operating temperature -40°C to +85°C
- * Gelatinous silicone conformal coating
- * Mechanical locking connectors
- * Ideally suited to extreme automotive and industrial applications, static or mobile
- * SAE J1455 - Recommended environmental practices for electronic equipment design (Heavy duty trucks)
- * SAE J1113 - Recommended practices for shock, vibration and electromagnetic compatibility with immunity to conducted transients on power leads

Rev 1.0



Interphasic LLC
1621 Plumas Avenue
Seaside, CA 93955

Phone: (831) 392-0708
Web: www.interphasic.com
E-mail: sales@interphasic.com